

Rappahannock River Railroaders

A club to remember



≡RRR≡

A Few Facts

- ~ 30 members
- Club Layouts located in Deltaville
 - O-Gauge 3-rail: 25 x 40 feet; 3 main lines
 - HO-Gauge: 15 x 30 feet; 4 main lines and two levels
 - G-Gauge: 40 x 50 feet around the room
- Four open house events per year
- Trailer with operating tracks for Fairs/Events (e.g., Urbana Oyster Festival)
 - Typically attend ~ six events per year

This our home



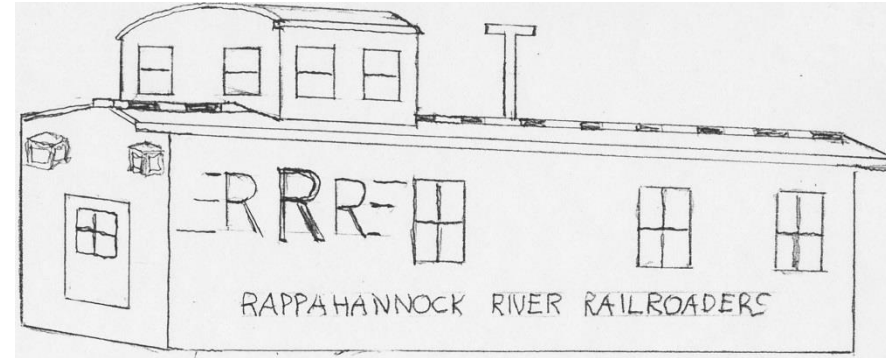
≡RRR≡

This is our home away from home



≡RRR≡

We decided to build a new home away from home



ERRR

Here is our new home away from home!!



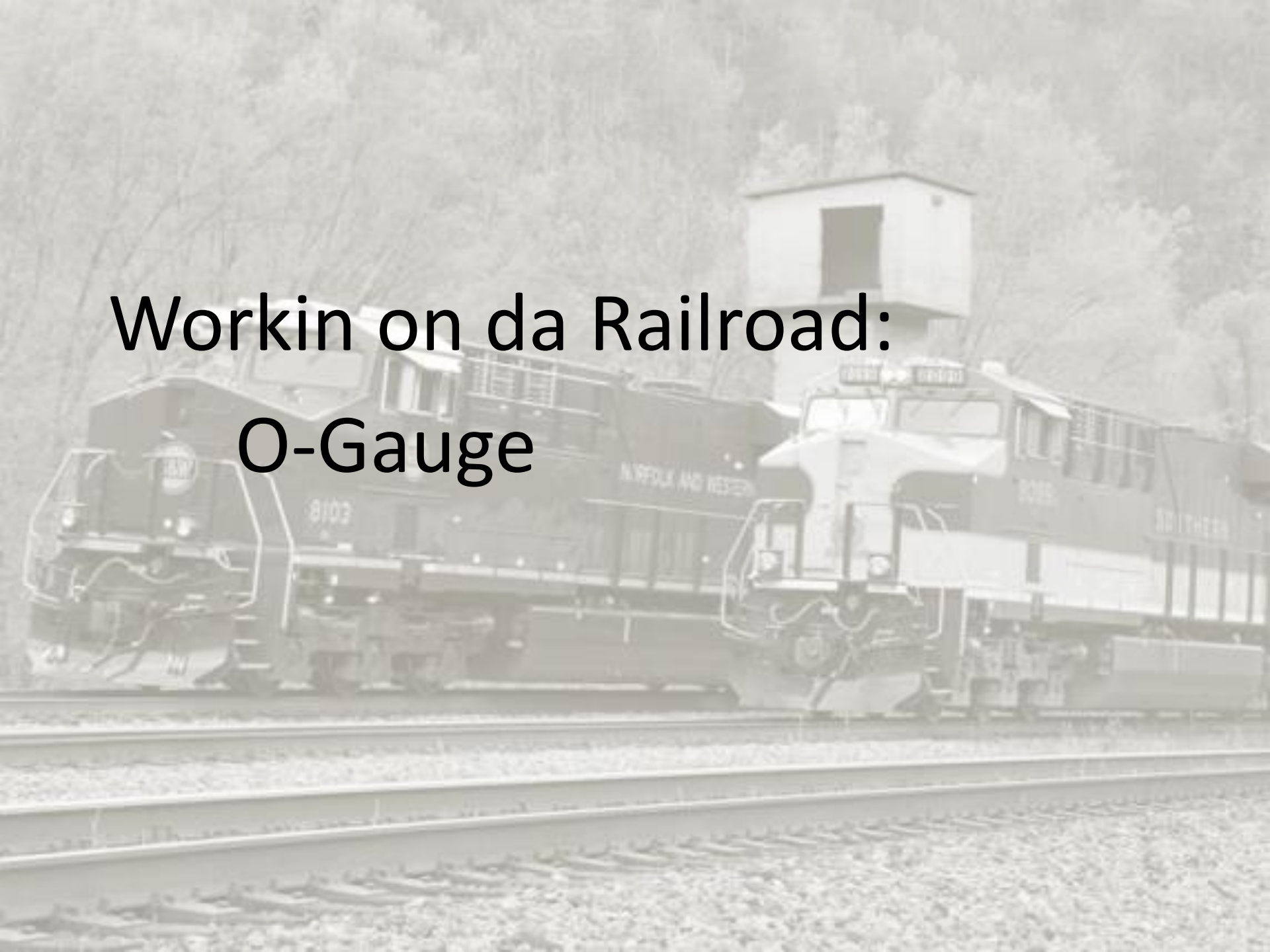
≡RRR≡

Some of da guys



≡RRR≡

Workin on da Railroad: O-Gauge

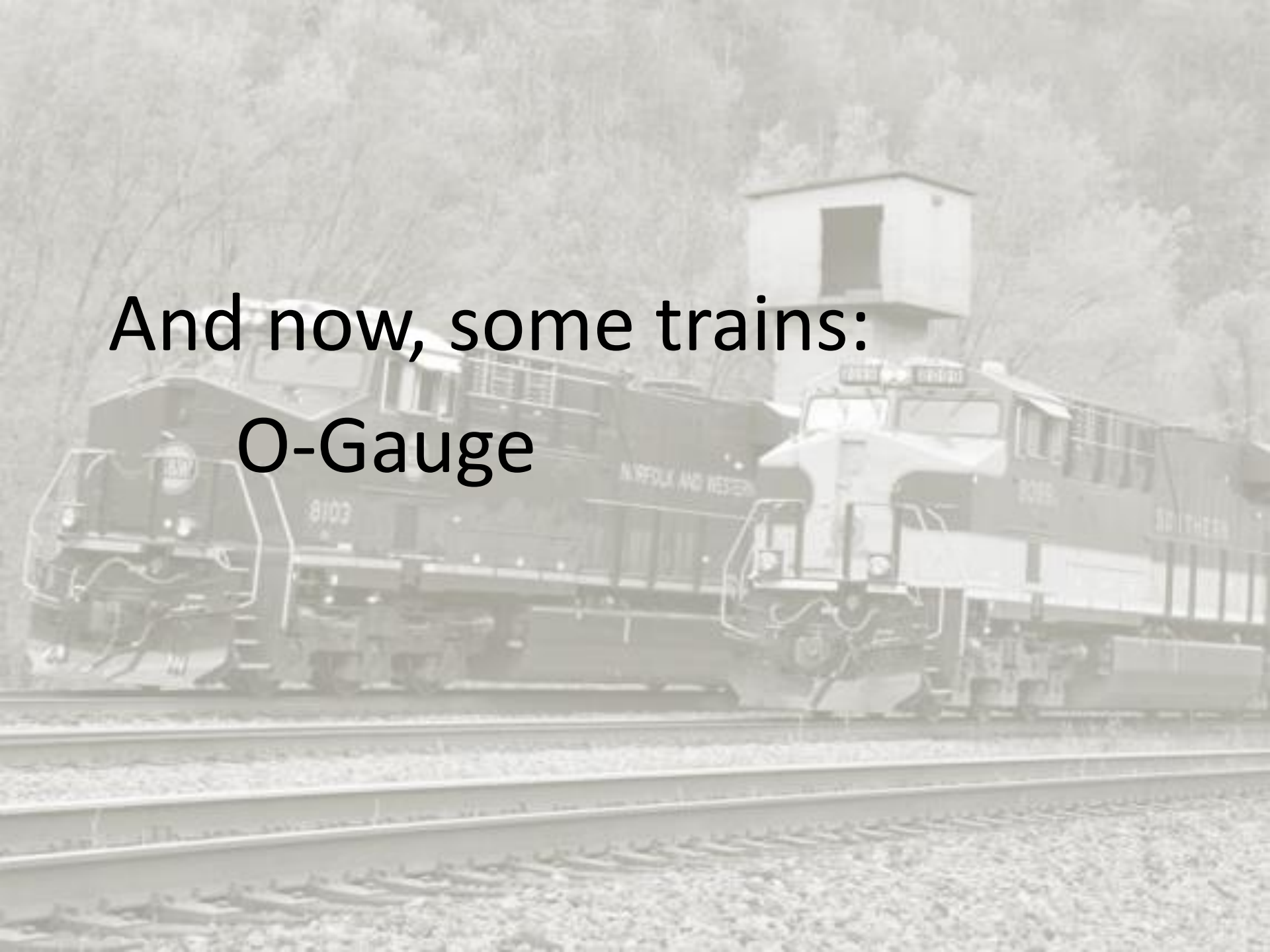








And now, some trains:
O-Gauge











H0-Gauge









HO GAUGE

Open House







Annual Christmas Party





You don't stop playing with trains when you get old,
You get old when you stop playing with trains !



≡RRR≡